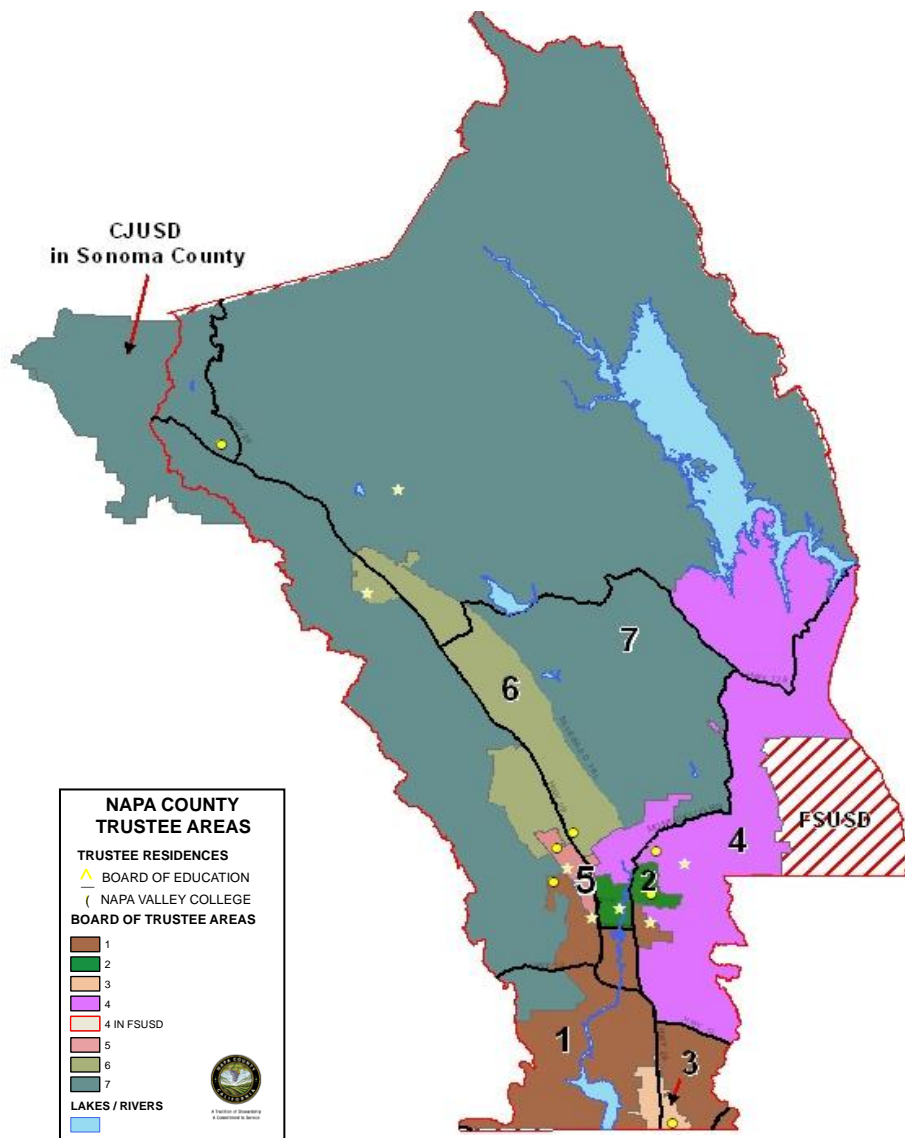




A Tradition of Stewardship
A Commitment to Service

Napa County Board of Education and Napa Valley College Trustee Areas





A Tradition of Stewardship
A Commitment to Service

Napa County Board of Education and Napa Valley College Trustee Areas

• **Overview of Redistricting**

- Guiding principal is one person one vote
- 2010 Census numbers became available March 2011
- Population is summarized by Census Block and Tracts
- The purpose of redistricting is to create trustee areas of equal population so that each person is guaranteed an equal voice in their representative government.



A Tradition of Stewardship
A Commitment to Service

Napa County Board of Education and Napa Valley College Trustee Areas

Criteria

- Equal Population
- Compliance with Federal and State Law (Voting Rights Acts – CA Elections Code)
- Respect for City & County Boundaries*
- Respect for Communities of Interest
- Compactness

* while meeting equal trustee area requirements



A Tradition of Stewardship
A Commitment to Service

Napa County Board of Education and Napa Valley College Trustee Areas

Understanding Deviation

The primary goal of redistricting is to have Trustee Areas of equal population. The 2011 Board Of Education and Napa Valley College Trustee Area boundaries should have a 2010 Census population deviation of **no greater than 5%**.



A Tradition of Stewardship
A Commitment to Service

Board Of Education Trustee Areas

Understanding BOE Total Population

2010 Census Total County Population	136,484
Portion of CJUSD in Sonoma County (Trustee Area 7)	+ 629
Less Portion of FSUSD in Napa County (Trustee Area 4)	- 240
Non-resident Population NSH* (Trustee Area 3)	- 984
Total County Population, less non-residents	135,889

*Elections Code 2025 – “A person does not gain or lose a domicile . . . while kept in an asylum . . .”

Population of Napa State Hospital (NSH) Census Tract = 1,224. Registered voters at NSH = 133. Population factor per registered household = 1.8. Resident population at NSH $133 \times 1.3 = 240$. Non-resident population at NSH is $1224 - 240 = 984$.



A Tradition of Stewardship
A Commitment to Service

Board Of Education Trustee Areas

Deviation of Population by Trustee Area **2001 boundaries**

- Target Population 19,413 (135,889 / 7)
 - Total Deviation **89.4 %** (needs to be < 5 %)
 - Trustee Area 1 – 18,175 (below by 6.4 %)
 - Trustee Area 2 – 17,831 (below by 8.1 %)
 - Trustee Area 3 – 28,101 (above by 44.8 %) *
 - 984 non-residents of Napa State Hospital excluded
 - Trustee Area 4 – 18,919 (below by 2.5%)
 - 240 population of FSUSD excluded
 - Trustee Area 5 – 18,511 (below by 4.6 %)
 - Trustee Area 6 – 16,611 (below by 14.4 %)
 - Trustee Area 7 - 17,741 (below by 8.6 %)
 - 629 population of CJUSD in Sonoma County included
- * **City of American Canyon = 19,446 people**



A Tradition of Stewardship
A Commitment to Service

Board Of Education Trustee Areas

Population Deviation 2011 BOUNDARIES

Target Population 19,413 (135,889/ 7)*

Total Deviation 0.75% (needs to be < 5 %)

Trustee Area 1 – 19,359 (below by 0.28 %)

984 non-residents of Napa State Hospital **excluded**

Trustee Area 2 – 19,429 (above by 0.08 %)

Trustee Area 3 – 19,446 (above by 0.17 %)

Trustee Area 4 – 19,410 (below by 0.02%)

240 population of FSUSD **excluded**

Trustee Area 5 – 19,401 (below by 0.06 %)

Trustee Area 6 – 19,429 (above by 0.08 %)

Trustee Area 7 - 19,425 (above by 0.06 %)

629 population of CJUSD in Sonoma County **included**

* City of American Canyon = 19,446 people



A Tradition of Stewardship
A Commitment to Service

Napa Valley College Trustee Areas

Understanding NVC Total Population

2010 Census Total County Population	136,484
Portion CJUSD in Sonoma County (Trustee Area 7)	+ 629
Non-resident Population NSH* (Trustee Area 3)	- 984
Total County Population, less non-residents	136,129

*Elections Code 2025 – “A person does not gain or lose a domicile . . . while kept in an asylum . . .”

Population of Napa State Hospital (NSH) Census Tract = 1,224. Registered voters at NSH = 133. Population factor per registered household = 1.8. Resident population at NSH $133 \times 1.3 = 240$. Non-resident population at NSH is $1224 - 240 = 984$.



A Tradition of Stewardship
A Commitment to Service

Napa Valley College Trustee Areas

Population Deviation by Trustee Area **2001 Boundaries**

- Target Population 19,447 (136,129/7)
- Total Deviation **89 %** (needs to be < 5 %)

Trustee Area 1 – 18,175 (below by 6.5 %)

Trustee Area 2 – 17,831 (below by 8.3 %)

Trustee Area 3 – 28,101 (above by 44.5 %)*

984 non-residents of Napa State Hospital **excluded**

Trustee Area 4 – 19,159 (below by 1.5 %)

Trustee Area 5 – 18,511 (below by 4.8 %)

Trustee Area 6 – 16,611 (below by 14.6 %)

Trustee Area 7 - 17,741 (below by 8.8 %)

629 population of CJUSD in Sonoma County **included**

* City of American Canyon = 19,446 people



A Tradition of Stewardship
A Commitment to Service

Napa Valley College Trustee Areas

Population Deviation 2011 Boundaries

- Target Population 19,447 (136,129/ 7)*
- Total Deviation 2.02 % (needs to be < 5 %)
 - Trustee Area 1 – 19,359 (below by 0.45 %)
984 non-residents of Napa State Hospital **excluded**
 - Trustee Area 2 – 19,429 (below by 0.09 %)
 - Trustee Area 3 – 19,446 (below by 0.00 %)
 - Trustee Area 4 – 19,650 (above by 1.04%)
 - Trustee Area 5 – 19,401 (below by 0.24 %)
 - Trustee Area 6 – 19,429 (below by 0.09 %)
 - Trustee Area 7 -- 19,425 (below by 0.11 %)
629 population of CJUSD in Sonoma County **included**

* City of American Canyon = 19,446 people



A Tradition of Stewardship
A Commitment to Service

Napa County Board of Education and Napa Valley College Trustee Areas

Trustee Area	Total 2010 Pop	2010 Hispanic	Total 2000 Pop	2000 Hispanic
1	19,359	35.5%	17,500	19.16%
2	19,429	41.2%	17,645	43.29%
3	19,446	25.7%	17,967	23.92%
4 without FSUSD	19,410	31.0%	16,823	21.95%
4	19,650	30.7%	17,602	21.75%*
5	19,401	40.3%	18,960	19.59%
6	19,429	27.3%	17,404	19.34%
7 with Sonoma portion of CJUSD	19,425	24.4%	17,219	17.42%*

* Approximate - Hispanic population of smaller areas in 2000 not available



A Tradition of Stewardship
A Commitment to Service

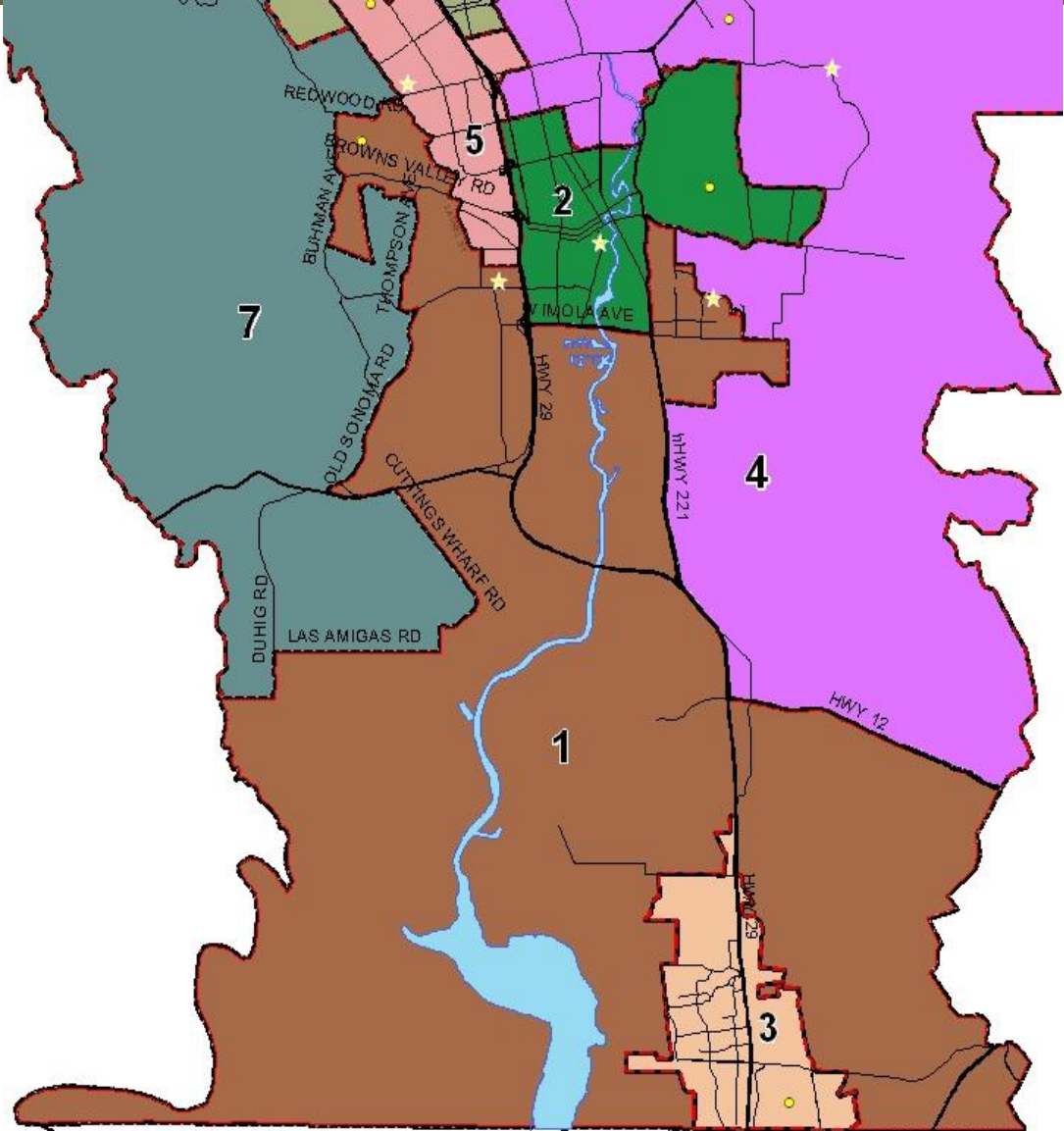
Napa County Board of Education and Napa Valley College Trustee Areas

Proposed BOE/NVC Areas	2010 African American %	2010 Asian %
1	0.01 %	2.51 %
2	0.65 %	1.17 %
3	7.89 %	32.89 %
4 BOE	0.67 %	3.24 %
4 NVC	0.70%	3.22%
5	0.56 %	1.83 %
6	0.54 %	1.96 %
7	1.23 %	3.32 %



A Tradition of Stewardship
A Commitment to Service

Napa County Board of Education and Napa Valley College **Trustee Area 1**




NAPA COUNTY TRUSTEE AREAS

TRUSTEE RESIDENCES
 ▲ BOARD OF EDUCATION
 ▽ NAPA VALLEY COLLEGE

BOARD OF TRUSTEE AREAS

- 1
- 2
- 3
- 4
- 4 IN FSUSD
- 5
- 6
- 7

LAKES / RIVERS

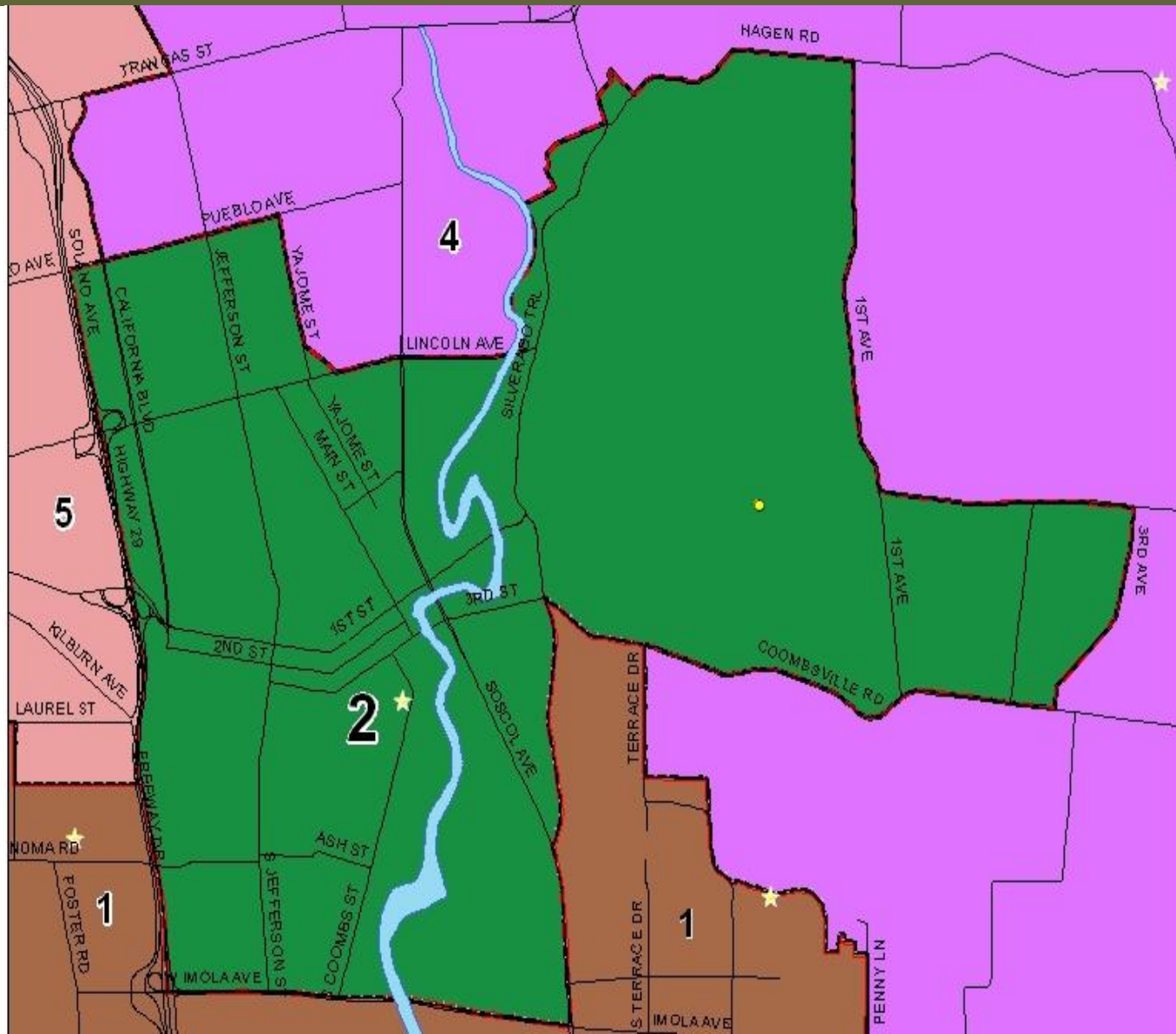


A Tradition of Stewardship
A Commitment to Service



A Tradition of Stewardship
A Commitment to Service

Napa County Board of Education and Napa Valley College **Trustee Area 2**




NAPA COUNTY TRUSTEE AREAS

TRUSTEE RESIDENCES
 ▲ BOARD OF EDUCATION
 (NAPA VALLEY COLLEGE

BOARD OF TRUSTEE AREAS

- 1
- 2
- 3
- 4
- 4 IN FSUSD
- 5
- 6
- 7

LAKES / RIVERS



A Tradition of Stewardship
A Commitment to Service



A Tradition of Stewardship
A Commitment to Service

Napa County Board of Education and Napa Valley College **Trustee Area 3**


NAPA COUNTY TRUSTEE AREAS

TRUSTEE RESIDENCES
 ▲ BOARD OF EDUCATION
 ○ NAPA VALLEY COLLEGE

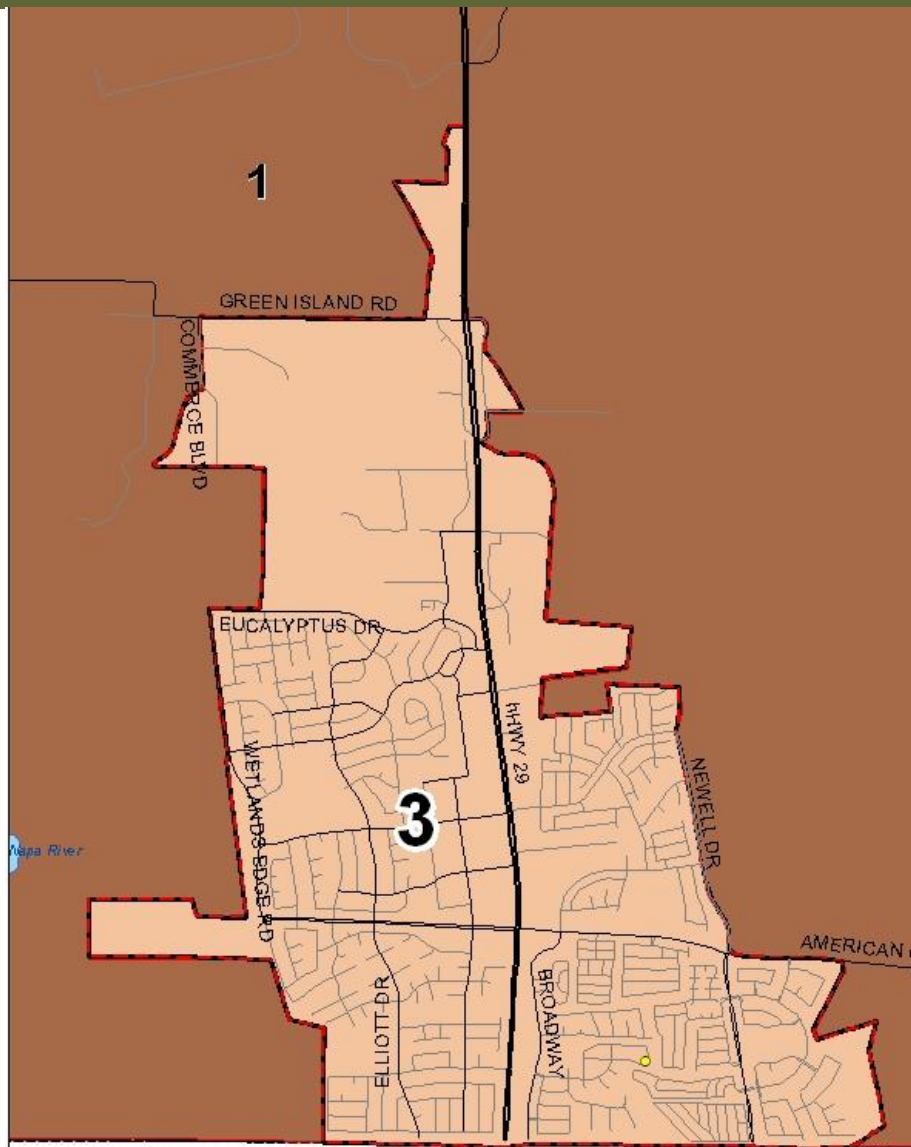
BOARD OF TRUSTEE AREAS

- 1
- 2
- 3
- 4
- 4 IN FSUSD
- 5
- 6
- 7

LAKES / RIVERS



A Tradition of Stewardship
A Commitment to Service





A Tradition of Stewardship
A Commitment to Service

Napa County Board of Education and Napa Valley College **Trustee Area 4**


NAPA COUNTY TRUSTEE AREAS

TRUSTEE RESIDENCES
 ▲ BOARD OF EDUCATION
 ○ NAPA VALLEY COLLEGE

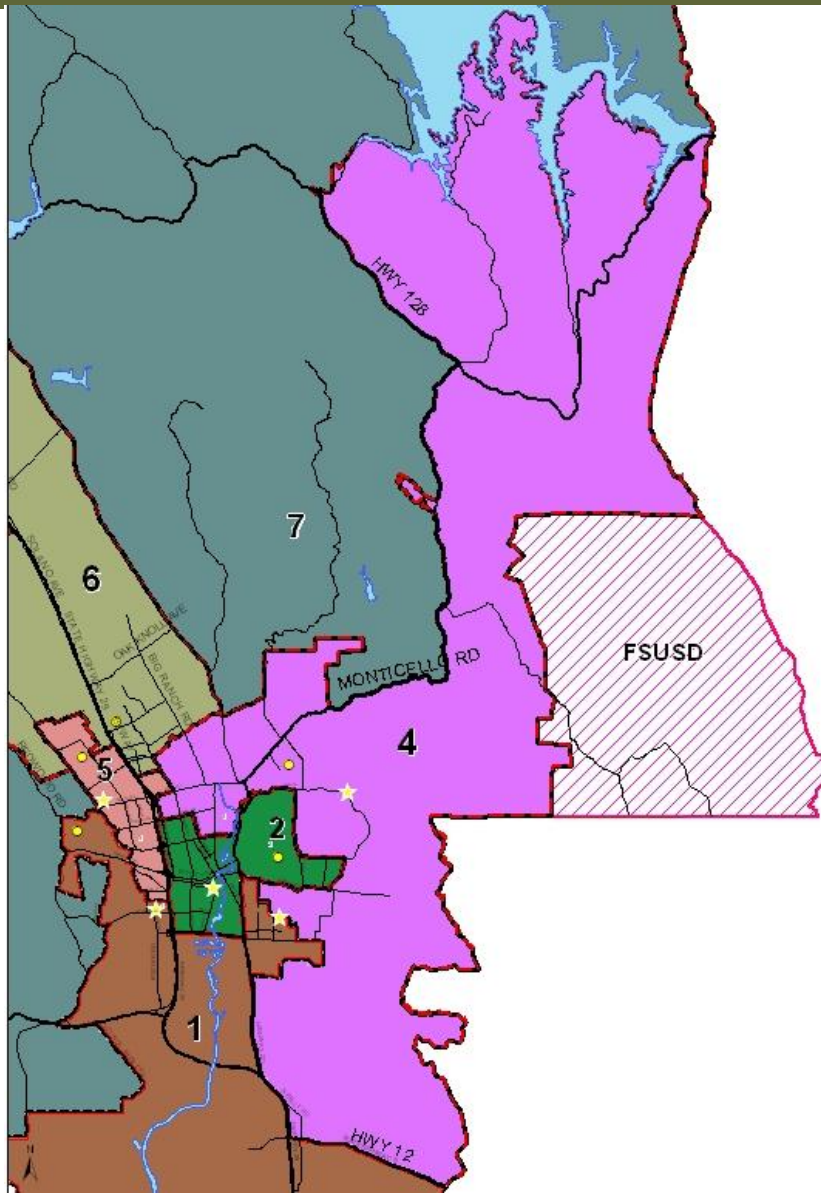
BOARD OF TRUSTEE AREAS

- 1
- 2
- 3
- 4
- 4 IN FSUSD
- 5
- 6
- 7

LAKES / RIVERS



A Tradition of Stewardship
A Commitment to Service





A Tradition of Stewardship
A Commitment to Service

Napa County Board of Education and Napa Valley College **Trustee Area 5**

NAPA COUNTY TRUSTEE AREAS


TRUSTEE RESIDENCES

- ▲ BOARD OF EDUCATION
- NAPA VALLEY COLLEGE

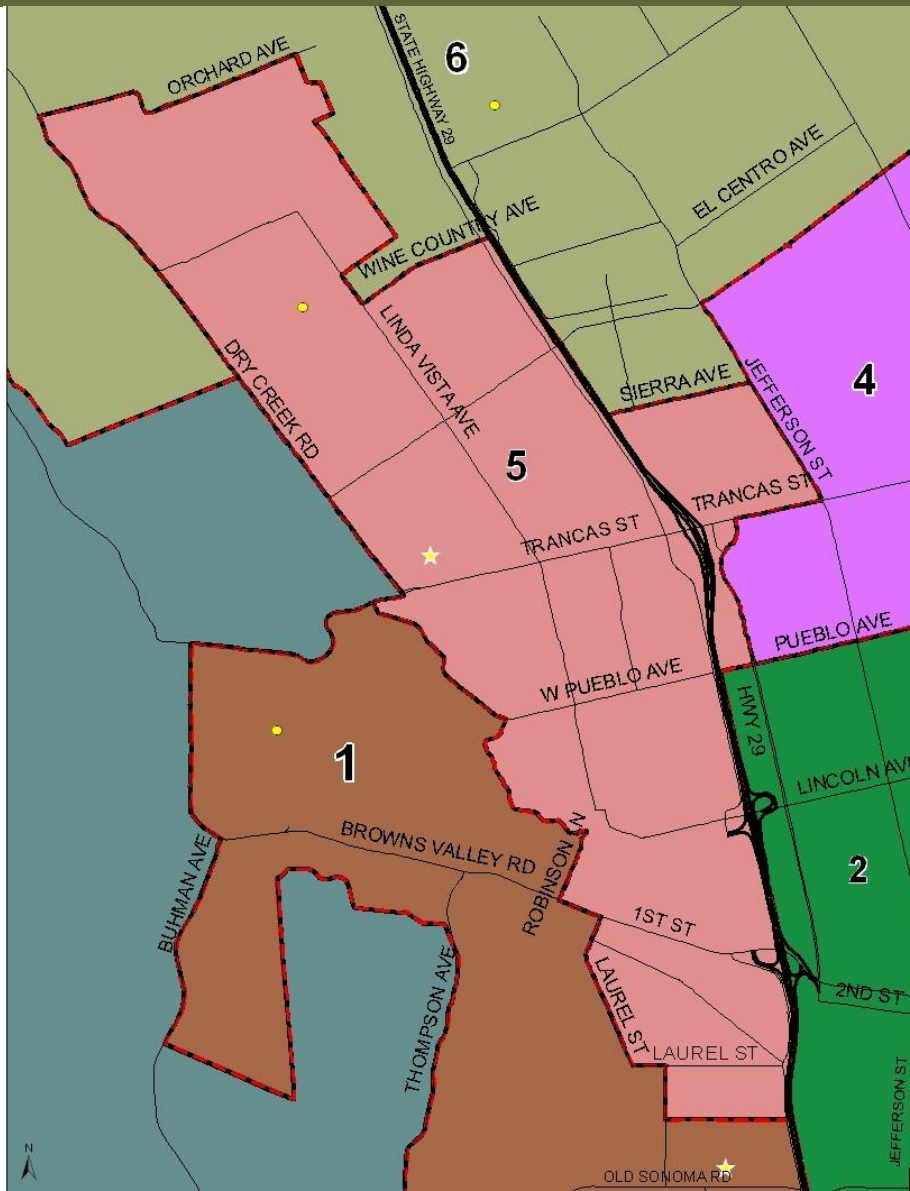
PROPOSED BOARD OF TRUSTEE AREAS

- 1
- 2
- 3
- 4
- 4 IN FSUSD
- 5
- 6
- 7

LAKES / RIVERS



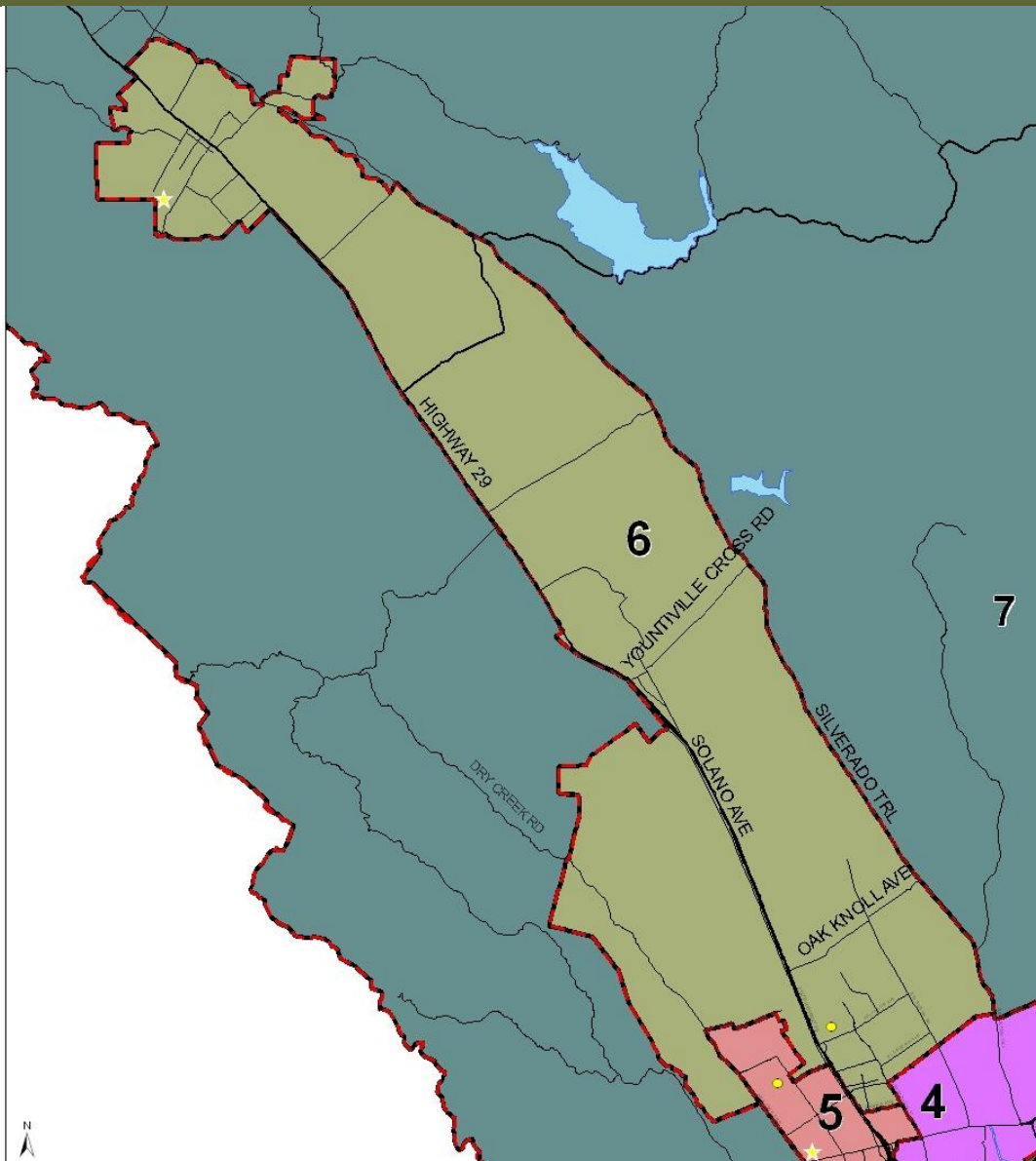
A Tradition of Stewardship
A Commitment to Service





A Tradition of Stewardship
A Commitment to Service

Napa County Board of Education and Napa Valley College **Trustee Area 6**



NAPA COUNTY TRUSTEE AREAS


TRUSTEE RESIDENCES

- ▲ BOARD OF EDUCATION
- NAPA VALLEY COLLEGE

BOARD OF TRUSTEE AREAS

- 1
- 2
- 3
- 4
- 4 IN FSUSD
- 5
- 6
- 7

LAKES / RIVERS



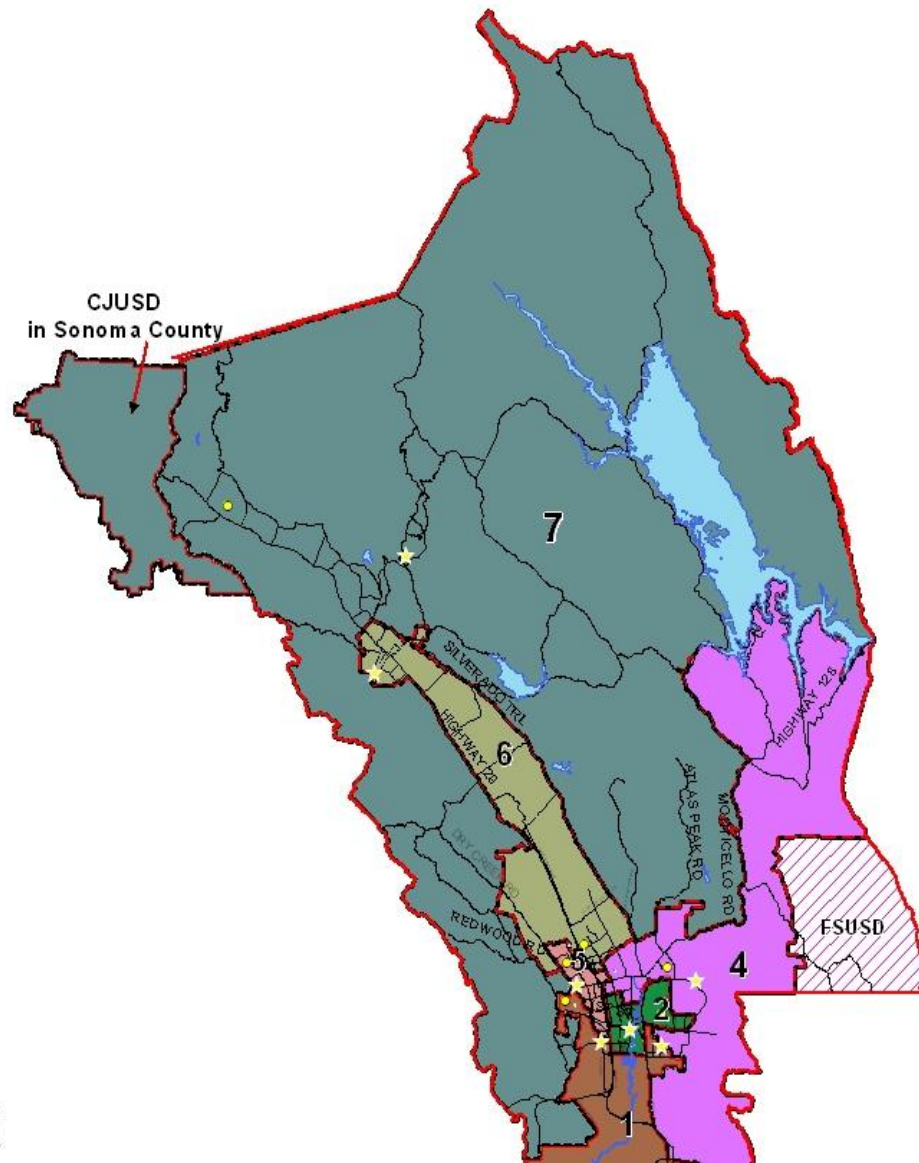
A Tradition of Stewardship
A Commitment to Service





A Tradition of Stewardship
A Commitment to Service

Napa County Board of Education and Napa Valley College **Trustee Area 7**




NAPA COUNTY TRUSTEE AREAS

TRUSTEE RESIDENCES
 ▲ BOARD OF EDUCATION
 (NAPA VALLEY COLLEGE

PROPOSED BOARD OF TRUSTEE AREAS

- 1
- 2
- 3
- 4
- 4 IN FSUSD
- 5
- 6
- 7

LAKES / RIVERS



A Tradition of Stewardship
A Commitment to Service





A Tradition of Stewardship
A Commitment to Service

2011 Redistricting

CONTACT

Registrar of Voters John Tuteur

707-253-4459

STAY TUNED

