
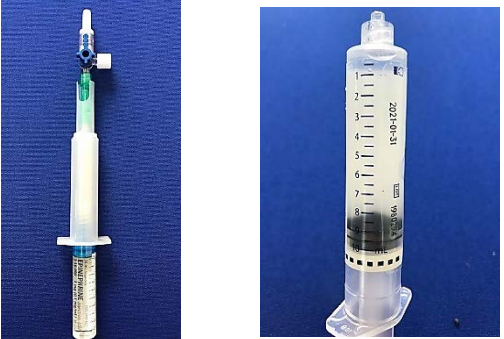





Push-Dose Epinephrine

ALS PROCEDURE AP-16

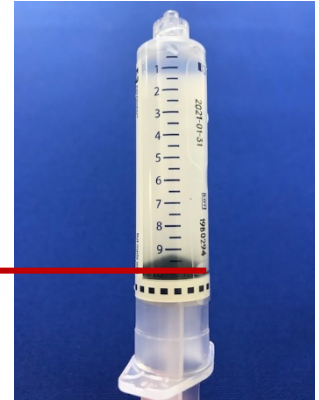
INDICATION	<ul style="list-style-type: none">• Symptomatic Bradycardia• Cardiogenic Shock
CONTRAINDICATIONS	<ul style="list-style-type: none">• Patients < 15 years of age• Systolic BP > 90mmHg
PROCEDURE	<ul style="list-style-type: none">• Step One: Collect materials needed: Epinephrine preload 1:10,000, Three-way Stopcock Valve, 10mL Normal Saline flush. 
PROCEDURE	<ul style="list-style-type: none">• Step Two: Assemble Epinephrine 1:10,000 preload and discard 1 mL of Normal Saline from the flush. 
PROCEDURE	<ul style="list-style-type: none">• Step Three: Using the three-way stopcock valve, attach the Epinephrine 1:10,000 preload to 9mL syringe of Normal Saline. 

- **Step Four:** Push 1mL of Epinephrine 1:10,000 into the 9mL syringe of Normal Saline to make the Push-Dose Epinephrine mixture.

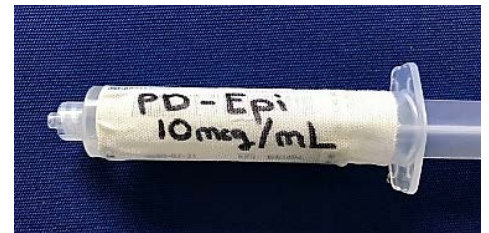


- **Step Five:** Detach the Push-Dose Epinephrine syringe and gently shake the mixture. One syringe contains 10 doses (100mcg/10mL).

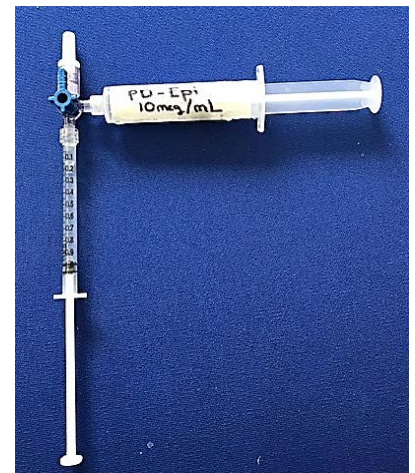
Push-Dose Epinephrine (10mcg/mL)



- **Step Six:** Label the syringe to prevent any confusion.



- **Step Seven:** Use a 1 mL syringe to draw each dose. 1 mL = 10 mcg of Push-Dose Epinephrine. Give 1 mL every 1-3 minutes to maintain a systolic blood pressure > 90mmHg.



- Push-Dose Epinephrine doses are small with extremely dilute concentration, use caution to ensure the medication is mixed correctly.
- 1 labeled syringe of correctly mixed Push-Dose Epinephrine contains 10 doses.
- Push-Dose Epinephrine is a temporizing vasopressor that has a rapid onset around 1 minute.
- Epinephrine has a very short half-life of < 5 minutes.