



A Tradition of Stewardship
A Commitment to Service

Department of Public Works

1195 Third Street, Suite 101
Napa, CA 94559-3092
www.countyofnapa.org/publicworks

Main: (707) 253-4351
Fax: (707) 253-4627

Steven E. Lederer
Director

August 3, 2022

**Re: SOUTH CAMPUS CHILD WELFARE SERVICES SAFETY AND SECURITY
IMPROVEMENT PROJECT, PW 21-28**

Dear Sir/Madam,

Enclosed herewithin is Addendum Number 2 for the above referenced project. This Addendum Number 2 forms a part of the contract documents, modifies the original specifications and drawings and shall be acknowledged in the Addendum Acknowledgement page of the bid proposal forms. All other conditions remain the same.

ADDENDUM NUMBER 2

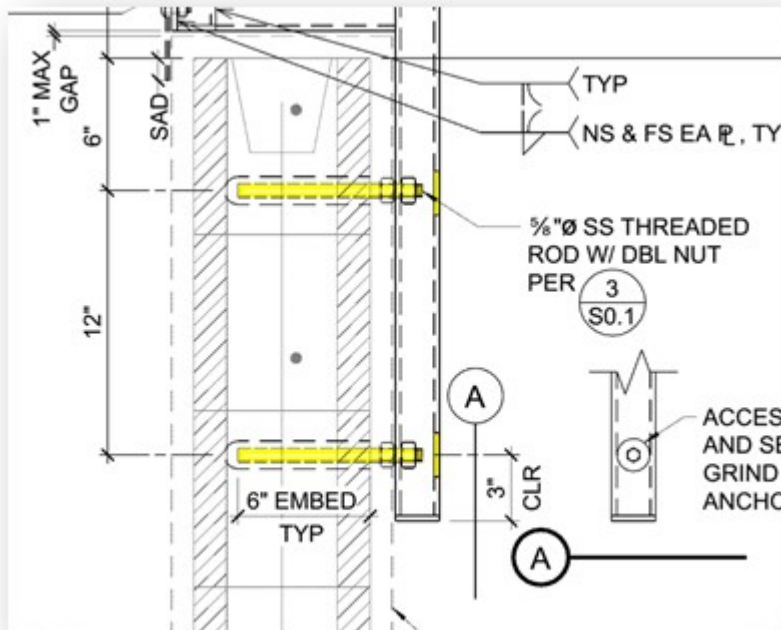
ITEM 1: Questions from Bidders:

Q1): I'm noticing that the HSS panel mounts are to connect to the wall via a temporary access hole that is to be plugged after installation. There are a number of issues with this approach that I'd like to address before pricing it this way:

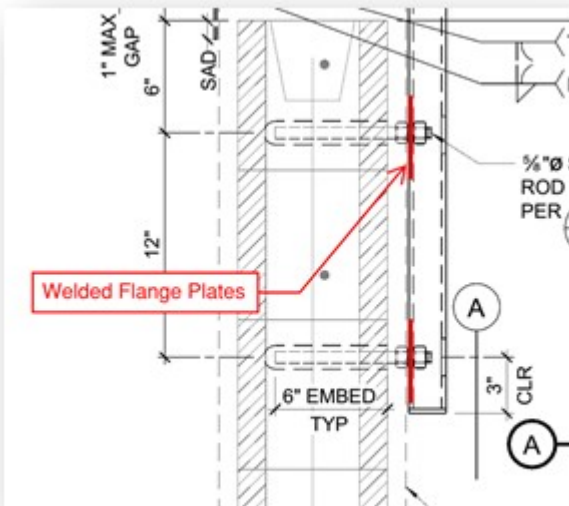
- a. Once those holes are plugged, you lose access to the anchors. If, for whatever reason, an anchor were to come loose, you would have to deconstruct the entire panel mount in order to rectify the issue.*
- b. Whatever plugging and grinding we would have to do to the area would completely ruin the finish on the steel. Even after touch-up, the difference in finish would be notably obvious.*
- c. This mounting application would be much more expensive than a standard welded flange plate approach.*
- d. We'd like to suggest welding flange plates to the "wall side" of the mounts allowing for exterior anchor access (this is a standard mounting technique for similar applications) similar to the aluminum panel to steel mount flange plates shown on the detail.*

There's a section of the new specs that MIGHT be considered an answer to this by the fact that it pushes the responsibility back to the bidding subcontractor (which seems inconsistent with public works bids if you're hoping to compare "apples to apples" bids). The new specification calls for "engineered support system consisting of tube steel supports with anchors, attachments, and accessories, as required for complete installation." (05 50 00-2.2-H). It doesn't address any of the options included in my initial question.

Per Plans ↓



Suggested ↓



A1): The bolt access holes in the HSS shall remain open for future access. Grind the edges of opening smooth prior to powder coat finishing in the shop. See updated detail for more information.

Q2): Can you please provide more specific information regarding the aluminum panels to be installed (there are literally thousands of different design, thickness, finish combinations available)? Pricing on plate panels can vary dramatically so we're going to need more direction before we can begin to provide pricing on this. The new specs call for a generic 1/4"x48"x96" aluminum sheet with a laser cut design "as selected by Architect" (05 50 00-2.2-G). Since I see no such selection on the project documents, I still have no idea what specific panel I should be pricing for this project.

A2): The basis of design for the decorative security screen is from 1/4" thick aluminum sheet metal available from Light Wave Laser, Santa Rosa. Laser cut pattern is "Roses". Scale of pattern shall be approximately 85% opaque, 15% open.

Q3): What are the metal finishes (frame and panel)?

A3): Powder coating finish shall be Pearlized Violet umb-1536 by Prismatic Powders, www.prismaticpowders.com

Q4): Is there a specific design for the new gate frames (i.e. HSS dimensions) or should I consider this a design-build decision?

A4): The intent is for the new gates to be the same type and manufacture as the existing gates.

ITEM 2:

See the attached revised sheet S0.1 outlining updated structural details.

ITEM 3: Last Day For Questions and Bid Opening date extension

The last day for questions for this project has been rescheduled from August 3, 2022 to August 10, 2022.

The bid opening for this project has been rescheduled from August 11, 2022 to August 18, 2022 at 11:30 am.

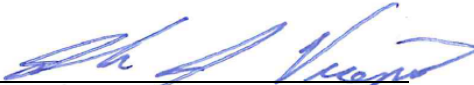
END OF ADDENDUM NUMBER 2

Thank you for your interest in this project. If you have any questions relating to this correspondence please submit in writing to John Vicencio by email at John.Vicencio@countyofnapa.org or Napa County Public Works, 1195 Third Street Suite 101, Napa Ca. 94559.

Very Truly Yours,

STEVEN E. LEDERER
Director of Public Works

by:


John J. Vicencio, P.E.
Associate Engineer

